

# Herm Island

Life from a fresh perspective



## WELCOME TO PARADISE

Castaway to an island of clear waters and golden sands, wild cliff paths and tended gardens, cosy inns and fine dining, pretty cottages and country-style hotel luxury and a history rich in smugglers' spoils and Prussian princes. In this little pocket of the Channel Islands you will discover a unique holiday destination with a landscape as diverse as its history.

Read the latest reviews and keep up to date by following us on:



[www.herm.com](http://www.herm.com)

Tel: 01481 750000



## WHERE TO STAY ON HERM

Choose from the elegant, country-style White House Hotel\*\*\*\*, homely holiday cottages, fully equipped tents or pitch your own under the stars.

The White House Hotel is the perfect place to unwind in style with its emphasis on peace and tranquillity. There are no televisions or clocks, so you can set your own pace and escape from the modern world in four star, award-winning comfort.

One of the most authentic ways to experience Herm life is to stay in one of our 20 fully equipped holiday cottages or log cabins which cater for up to six people, some with their own gardens and some dog friendly.

Alternatively enjoy the unspoilt beauty of the island under canvas at Seagull Campsite which sits at the top of the island with full facilities and a dedicated warden.

## EATING & DRINKING

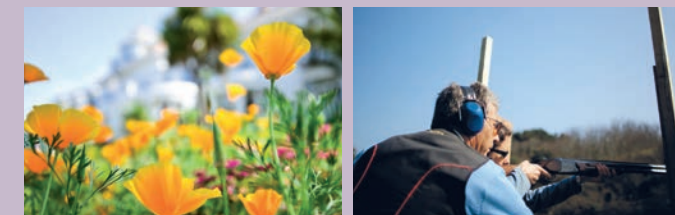
For such a small island you are spoilt for choice with a wide range of eateries on offer. The White House Hotel, The Ship Inn Brasserie, Mermaid Tavern & Restaurant and the beach cafés all serve a fabulous range of food from à la carte feasts to the humble bacon sarnie. For large parties we can cater for up to 100 people in the Mermaid Tavern top deck area or up to 150 people in the hotel marquee.

Choose from a selection of hand picked wines when dining at The White House Hotel or try our own Herm Island Gold ale in the Mermaid after a long day on the beach. One thing you can always be assured of is a warm welcome and great hospitality.

Enjoy an evening in Herm with boat trips from Guernsey departing at 7pm and returning at 10.45pm. See overleaf for guaranteed sailings\* and further details on how to book.



[www.herm.com](http://www.herm.com)



## THINGS TO DO

Whether you crave a relaxing holiday enjoying some of the most beautiful beaches in Europe, a few days walking in stunning scenery, a whistle-stop bird-watching tour or fishing with friends, Herm is the perfect place to make your vision a reality. From kayaking to clay pigeon shooting or just getting away from it all, Herm has something for everyone.

Visit our website for details on accommodation, special packages, Gourmet & Wine Tasting Weekends and dates for events like guided walking tours, sand castle competitions, dog walking days and beach BBQs. Two favourite annual events are the Mermaid Tavern Real Ale & Cider Festivals which are being held from Tuesday 4 until Sunday 9 June and Wednesday 11 until Sunday 15 September this year.

Make sure you leave room in your suitcase as shopping in Herm Island's Gift Shops is a must. They offer a treasure trove of goodies from beach sets, jewellery, homewares and beautiful souvenirs to hats, sunglasses, clothing and footwear from brands such as Weird Fish, Lazy Jacks, Butterfly Twists, Reef, Emma Bridgewater, Dunoon and many more. They also have a fantastic range of toys, novelties and gifts to suit even the smallest pockets, as well as confectionery, toiletries and all your holiday essentials.

# TRAVEL TRIDENT

## 2019 TIMETABLE



**Herm Island,**  
just 20 minutes away  
Daily service 7 days a week



**JAN - APRIL & OCT - DEC 2019** see overleaf for details

**MAY, JUNE & SEPTEMBER**      **JULY & AUGUST**

Departures to Herm	Choice of Return	Departures to Herm	Choice of Return
08:30 * ≈	09:00	08:30 *	09:00
10:30	10:50	10:15	10:35
12:15	12:35	11:15	11:35
14:15	14:35	12:15	12:35
15:15	15:35	14:15	14:35
17:15	17:35	15:15	15:35
		16:15	16:35
		17:15	17:35

**STANDARD FARE / PERIOD RETURN**  
Adults £13.50 Children £7.00 Infants £1.50

**\*SPECIAL FARE** (departing at 08:30 same day return)  
Adults £11.50 Children £6.00 Infants £1.50

≈ Occasionally we operate a 07:30 instead of the 08:30.  
Please check prior to departure.

[www.traveltrident.com](http://www.traveltrident.com)

Sailing times are subject to weather and tidal conditions.

### JANUARY & FEBRUARY

During January and February we offer a limited daily service, (except on a Sunday in January) departing early morning and returning late afternoon. In addition an extra sailing is offered at midday on a Wednesday.

Winter can be a beautiful time to visit Herm, however The White House Hotel\*\*\*\* is closed for annual maintenance and the Mermaid Tavern (closed in January) is only open on certain days (normally Wednesday and Saturday). If you decide to visit in January be prepared for the weather as there is little shelter on the island and be sure to take food and drink with you.

### APRIL & OCTOBER

**Departures to Herm**

**Choice of Return**

08:30 * ≈	09:00
10:30	10:50
12:15	12:35
14:15	14:35
16:30 APR	17:00 APR
16:15 OCT	16:35 OCT

### NOVEMBER, DECEMBER & MARCH

During November, December and March the timetable varies considerably. We operate a daily service which increases during winter promotions and throughout the Christmas and New Year festive period. Please check in advance if you wish to visit at this time as the island "opens up" to welcome visitors on certain days.

### DINNER BOAT GUARANTEED SAILINGS\*\*

The Dinner Boat is guaranteed to operate on a Wednesday, Friday and Saturday starting 22nd May through until 14th September 2019 (\*\*subject to weather). Other evenings throughout the season subject to arrangement. Please make your reservation directly with The White House Hotel or Mermaid Tavern who will in turn notify Travel Trident.

### DINNER BOAT FARES

Adults £11.50 Children £6.00  
Departs 19.00 Returns 22:45

**Please check in and pay for the boat fare at the Weighbridge kiosk 15 minutes prior to departure.**



### INFORMATION ON WINTER SAILINGS

Visit our website: [www.traveltrident.com](http://www.traveltrident.com)  
or Tel: 01481 721379 / 01481 750000

Alternatively during winter the Trident Ticket office is open Wednesday and Saturday 11:30 - 12:30. Winter timetable displayed in kiosk window. See map for location.

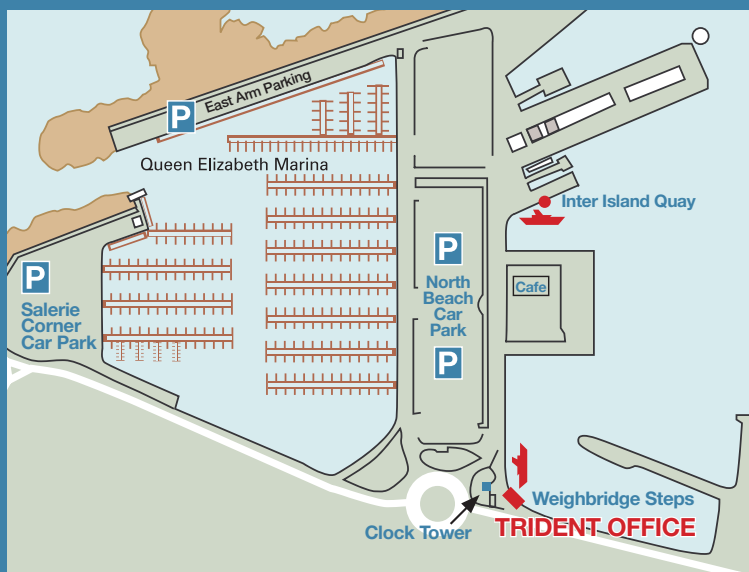
### TRAVEL TRIDENT TICKET OFFICE

Weighbridge Clock Tower, Liberation Monument, St Peter Port, Guernsey, GY1 2ND. See map below.

### TERMS & CONDITIONS

For further information on Travel Trident services including full details of terms and conditions of transportation, both passenger and cargo please visit the Travel Trident ticket office or Tel: 01481 721379.

Visit our website: [www.traveltrident.com](http://www.traveltrident.com)  



### Herm Island Garden Tour

Led by the island gardener, explore Herm's beautiful flora and fauna every Tuesday from 23 April until 17 September at 11:00am. Meet in front of The Ship Inn. Tour price £8 pp, RHS members £6 pp. Numbers are limited. For private groups Tel: 01481 750000.



### USEFUL TELEPHONE NUMBERS

Herm Island	Tel: 01481 750000
The White House Hotel	Tel: 01481 750075
Holiday Cottages and Camping	Tel: 01481 750000
Mermaid Tavern & Restaurant	Tel: 01481 750050
The Ship Inn Brasserie	Tel: 01481 750075
Herm Gift Shops	Tel: 01481 750030

*Herm Island*  
Life from a fresh perspective



[www.herm.com](http://www.herm.com)

Tel: 01481 750000